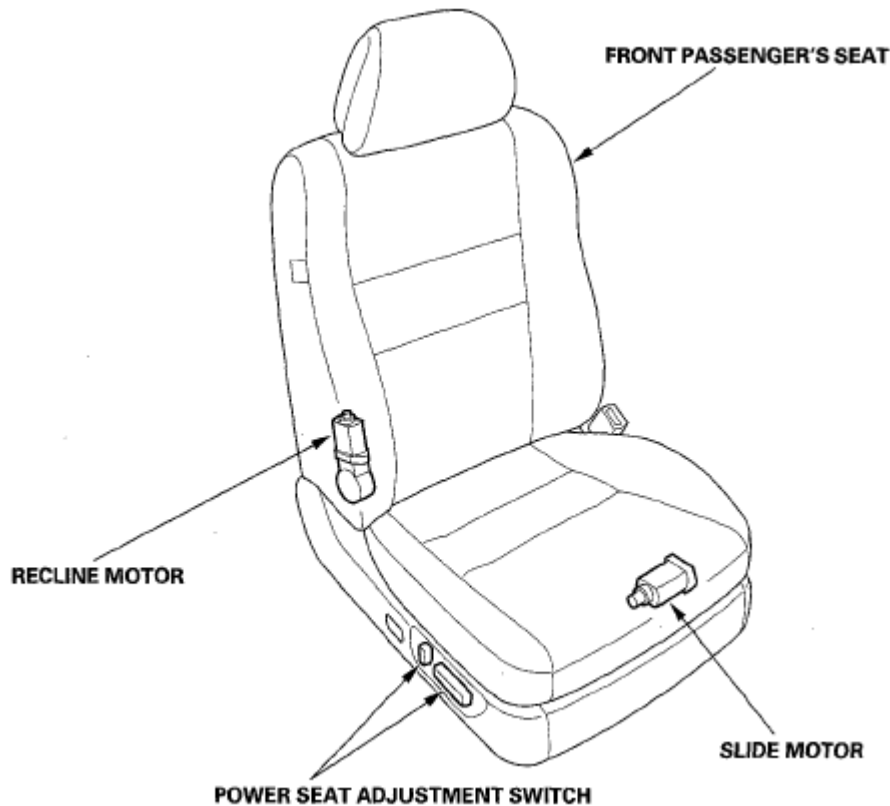


## 2005-08 ACCESSORIES AND EQUIPMENT

### Power Seats - RL

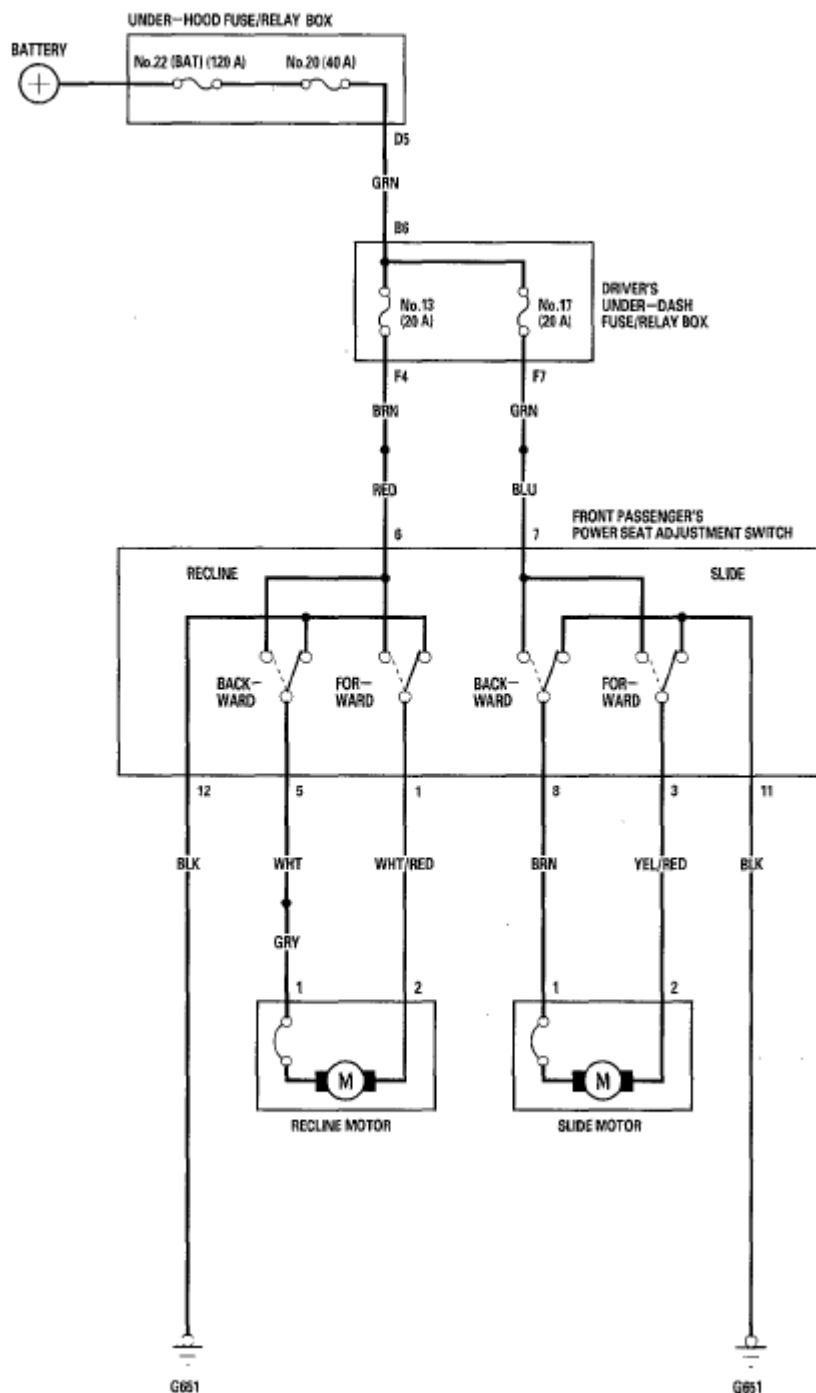
## COMPONENT LOCATION INDEX

For the Driver's Power Seat, refer to DRIVER POSITION MEMORY SYSTEM (DPMS) for the COMPONENT LOCATION INDEX.



**Fig. 1: Identifying Location Of Front Passenger Power Seat Components**  
Courtesy of AMERICAN HONDA MOTOR CO., INC.

## CIRCUIT DIAGRAM - FRONT PASSENGER'S POWER SEAT



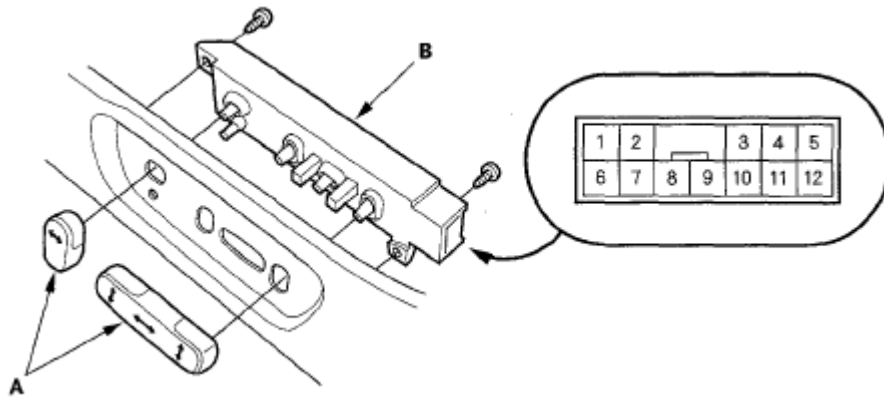
**Fig. 2: Front Passenger's Power Seat - Circuit Diagram**  
 Courtesy of AMERICAN HONDA MOTOR CO., INC.

## POWER SEAT ADJUSTMENT SWITCH TEST/REPLACEMENT

**NOTE:** For the driver's power seat, refer to the Driving Position Memory System (DPMS) (see POWER SEAT ADJUSTMENT SWITCH TEST/REPLACEMENT ).

### FRONT PASSENGER'S SEAT

1. Remove the power seat adjustment switch knobs (A) and recline cover from the front passenger's seat (see **FRONT SEAT DISASSEMBLY/REASSEMBLY** ).



**Fig. 3: Identifying Power Seat Adjustment Switch Knobs And Power Seat Adjustment Switch**  
Courtesy of AMERICAN HONDA MOTOR CO., INC.

2. Remove the two screws and power seat adjustment switch (B).
3. Disconnect the 12P connector from the power seat adjustment switch.
4. Reinstall the switch knobs to the switch.
5. Check for continuity between the terminals in each switch position (see **Fig. 4**).

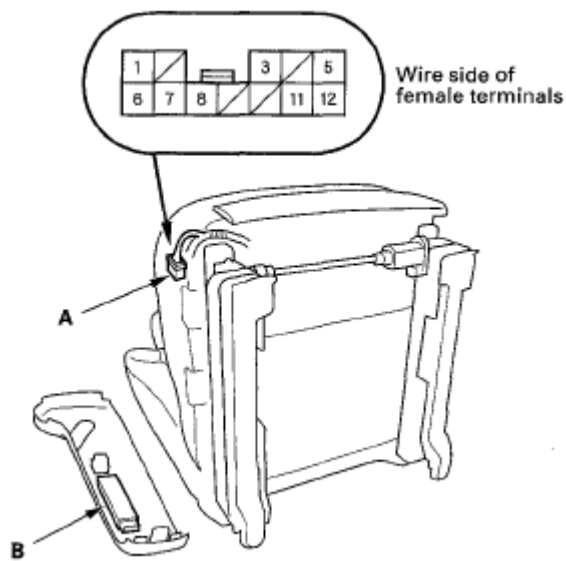
| Terminal       |          | 1 | 3 | 5 | 6 | 7 | 8 | 11 | 12 |
|----------------|----------|---|---|---|---|---|---|----|----|
| Position       |          |   |   |   |   |   |   |    |    |
| SLIDE SWITCH   | Forward  |   | ○ |   |   | ○ |   | ○  | ○  |
|                | Backward |   | ○ |   |   | ○ | ○ |    | ○  |
| RECLINE SWITCH | Forward  | ○ |   | ○ | ○ |   |   |    | ○  |
|                | Backward | ○ |   | ○ | ○ |   |   |    | ○  |

**Fig. 4: Checking For Continuity Between Terminals In Each Switch Position**  
Courtesy of AMERICAN HONDA MOTOR CO., INC.

6. If the continuity is not as specified, replace the switch.

## FRONT PASSENGER'S POWER SEAT MOTOR TEST

1. Remove the front passenger's seat (see **FRONT SEAT REMOVAL/INSTALLATION** ).
2. Remove the power seat adjustment switch knobs and recline cover from the seat (see **FRONT SEAT DISASSEMBLY/REASSEMBLY** ).
3. Disconnect the 12P connector (A) from the power seat adjustment switch (B).



**Fig. 5: Identifying Power Seat Adjustment Switch And 12P Connector**  
Courtesy of AMERICAN HONDA MOTOR CO., INC.

4. Test each motor by applying battery voltage and body ground to the 12P connector terminals.

#### Slide motor

| Terminal Position | 3 | 8 |
|-------------------|---|---|
| Forward           | ⊕ | ⊖ |
| Backward          | ⊖ | ⊕ |

**Fig. 6: Identifying Terminals Power And Body Ground Reference Chart - Slide Motor**  
Courtesy of AMERICAN HONDA MOTOR CO., INC.

#### Recline motor

| Terminal Position | 1 | 5 |
|-------------------|---|---|
| Forward           | ⊕ | ⊖ |
| Backward          | ⊖ | ⊕ |

**Fig. 7: Identifying Terminals Power And Body Ground Reference Chart - Recline Motor**  
Courtesy of AMERICAN HONDA MOTOR CO., INC.

5. If the motor does not run or fails to run smoothly, check for an open in the front passenger's seat wire harness between the 12P connector and each motor connector. If the harness is OK, replace the motor.
  - Slide motor (see **PASSENGER'S SEAT** ).
  - Recline motor (see **SEAT-BACK** ).